

---

# DMMVIEW\_8145B Software Users Manual

**Version: 1.0**

- 
- 1. Initial Use**
  - 2. Instruction**
  - 3. Menu**
  - 4. Tool Bar**
  - 5. Window Explanation**
  - 6. F&Q**
-

---

## 1. Initial Use

Before the initial use, install the DMMVIEW\_8145B software and USB transmitter driver correctly. Put the enclosed disk into the PC disk driver, open the folder named as “Driver Installation”, read the “Driver Installation Instruction” file, and then install step by step (the default path is recommended to avoid unnecessary problem); Open “DMMVIEW\_8145B” folder, click on “setup.exe” twice, and install the software following the instruction. When finishing, you can make communication between a PC and the meter via the software.

## 2. Instruction

This terminal procedure is a meter monitoring and data recording software developed on WINDOWS (Windows2000/XP) platform, employing USB interface cable connection to realize communication function between the meter and a PC, which helps the meter store and analyze the real-time data more precisely and strengthens the measuring efficiency and recording accuracy via taking advantage of the great data processing capacity of the PC.

Under this software environment, you can execute the real-time monitoring function, real-time recording function and COMP function; you can save files in .xls and .txt formats, and execute auto-save function, which can record the data in the PC without monitoring for a long-time.

Before using the DMMVIEW\_8145B software, make sure the USB interface cable between the meter and the PC is connected correctly and the set communication port of the software is complied with the corresponding port

## 3. Menu

Open the software. In the menu window, we could found six choices (See Figure 1), which are:

### File:

**Open:** Open files in the PC saved in “.xls” and “.txt” formats;

**Close:** Close all the already-opened recording windows;

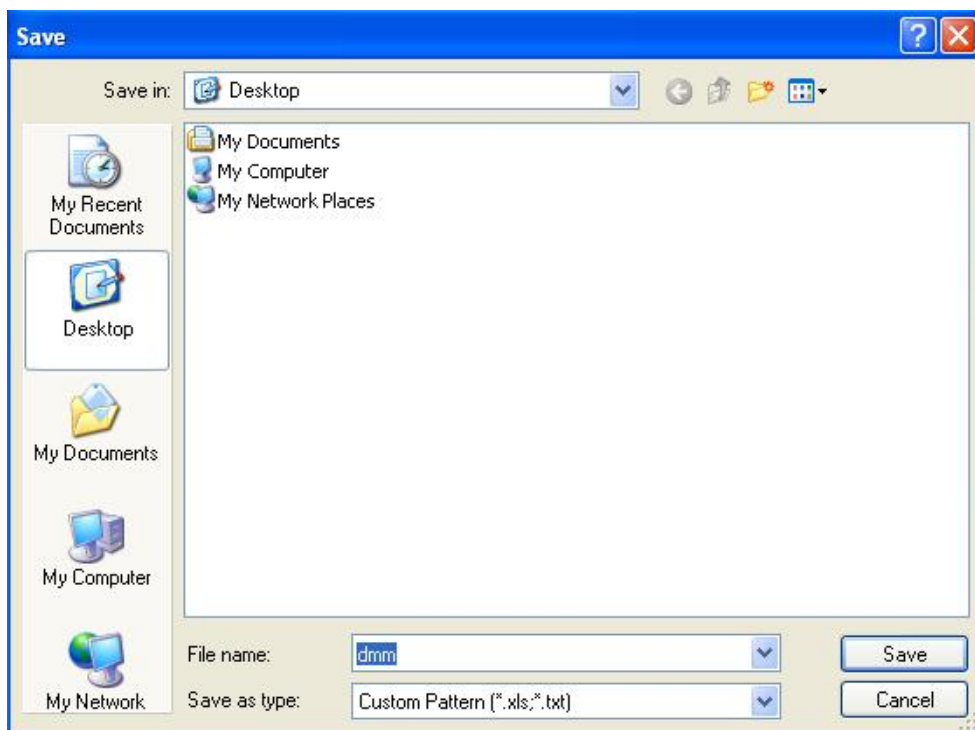
**Save:** Save data into the data recording list, in .xls(default) and .txt formats(see Figure 2); (Note: input .txt after the filename in order to save the file as a \*.txt file )



**Figure 1**

**Save as:** Save the saved file again, and the path and the format could be changed (.xls or .txt);

**Exit:** Exit the upper-end software procedure;



**Figure 2**

**Realtime data log:** Save the measured real-time data according to the set time (see Figure 3);

**RT New:** Start new recording task; set the interval time and recording time reference value (see Figure 4);

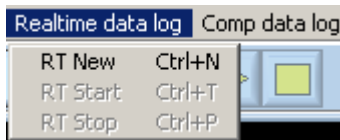
**RT Start:** Start a task, the measured real-time data is displayed in the head part, and the data-recording list undertakes data storage function according to the newly set reference value;

**RT Stop:** Stop recording and refreshing the real-time data display;

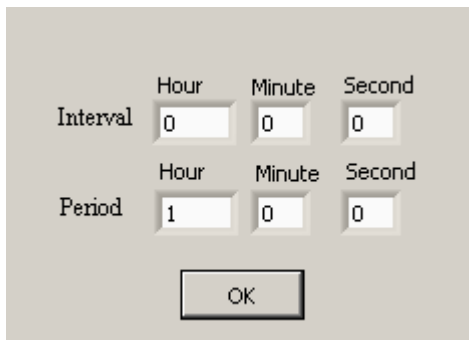
**Note**

1. When recording time arrives at the set time, the system stops recording.
2. During the recording process, the operation of storage function will take recording time.

3. In the real time mode, record all the data in the real time mode when the interval setting time is 0 seconds; record is no time limit when record time is setting for 0 seconds.



**Figure 3**



**Figure 4**

**COMP data log:** (see Figure 5) record the measured present value according to the set limits;

**COMP Set:** set the upper and the lower limits, choose data within recording range or out of recording range;

**COMP Start:** start a task, the measured real-time data is displayed in the head part, and the data recording list undertakes data storage according to the newly-set reference value;

**COMP Stop:** stop COMP recording;

**Note**

- 1, The software cancels COMP function automatically if the mode is changed.
- 2, Realtime data log and COMP data log could be activated when the meter is online,



**Figure 5**

**Settings:**

**COM port:** Choose a COM port to communicate with the meter (see figure 6);

Method: install the diver, connect the USB Interface cable with a PC, and click on in the follow sequence: Desk → My Computer → Right Key → choose a property → Hardware → Control Panel → Connection, find CP210xUSB to UART Bridge Controller (an abbreviation for the reflected COM) in the list and choose it.

**Note**

Only after the cable is connected with a PC will the corresponding connection be on the Device

---

Manager window.

**Auto save:**

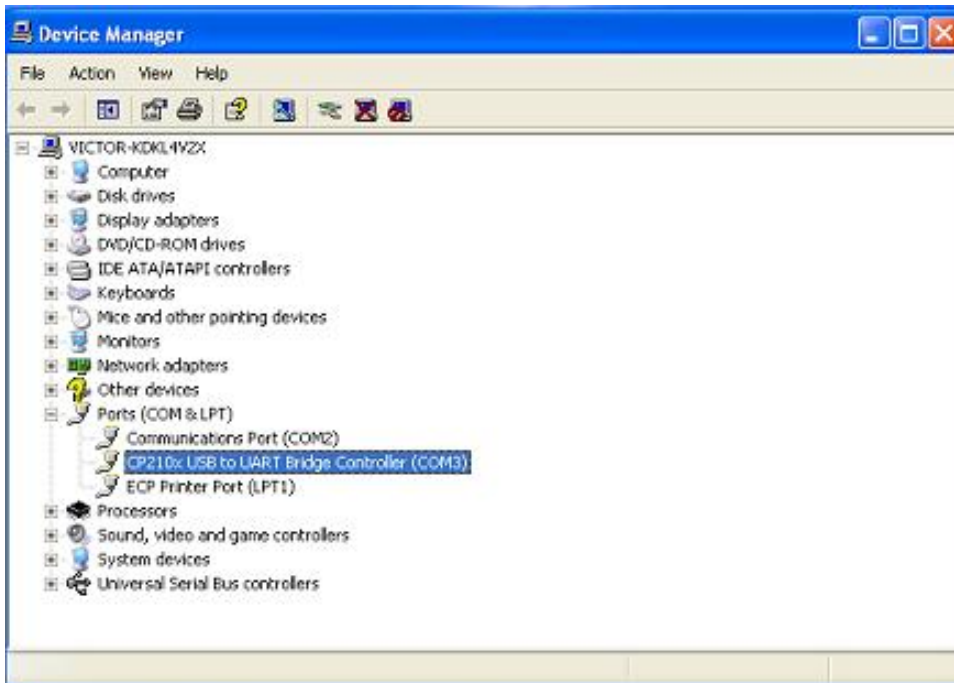
**Start:** Start auto-save function, available for any of the monitoring recording function;

**Close:** Stop auto-save function;

**Auto Set:** Default Path: My Documents \ DMMDATA

Default saved format: .xls

Default saved number: 100

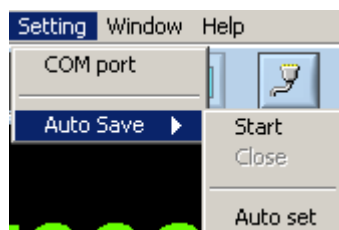


**Figure 6**

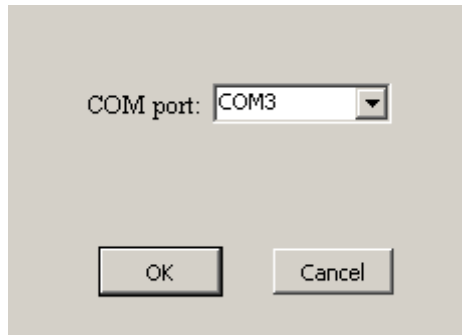
**Note**

1. The number of the auto-storage recording is allowed to set from 10 to 50,000(10 and 50,000 are included);

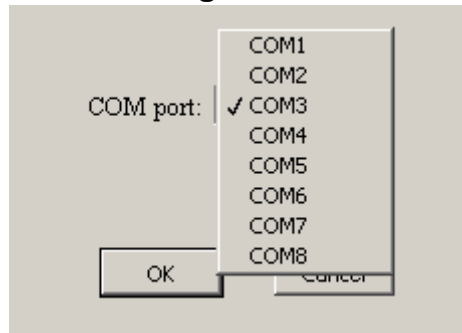
See the following figure for related operations:



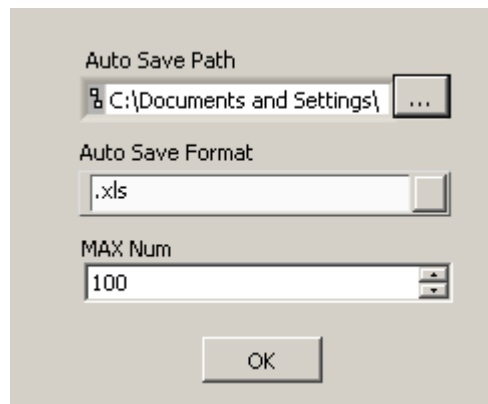
**Figure 7**



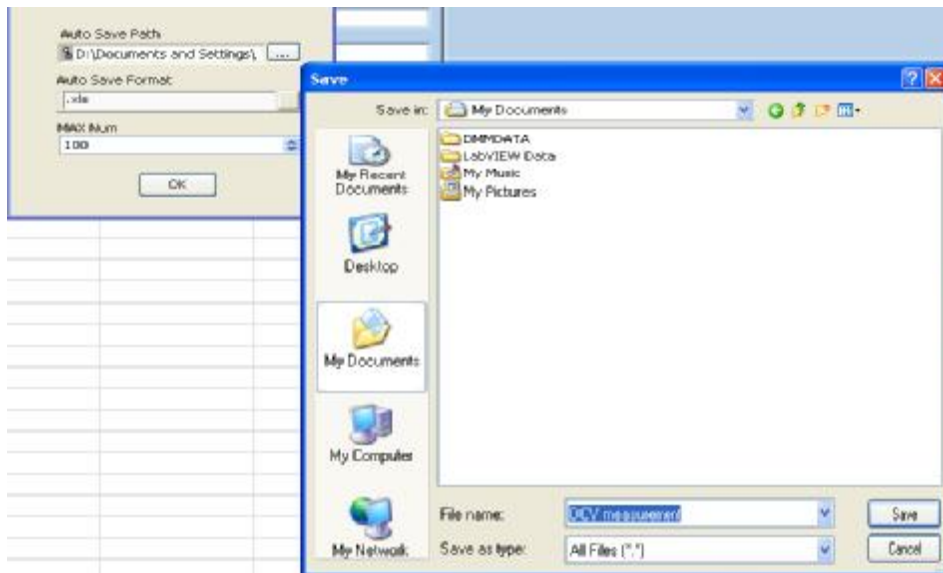
**Figure 8**



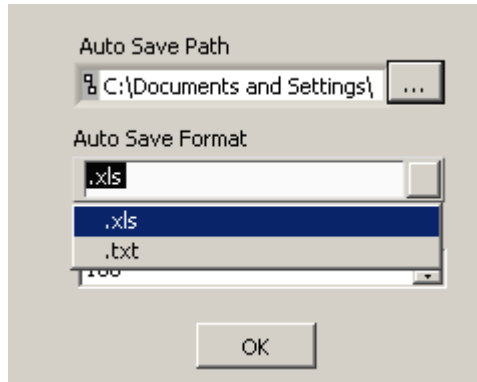
**Figure 9**



**Figure 10**



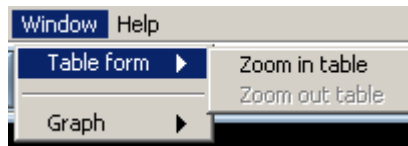
**Figure 11**



**Figure 12**

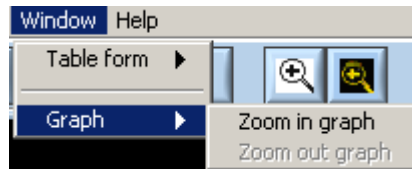
**Windows:**

- Table form:** Zoom in table: Enlarged recording list;  
Zoom out table: Original recording list;



**Figure 13**

- Graph:** Zoom in graph: Enlarged graph;  
Zoom out graph: Original graph;



**Figure 14**

**Help:**

- About DMMVIEW...:** simple explanation of the software;

**4. Tool Bar**

The tool bar button includes: Open, Save; real-time data log: New, Start, Stop; COMP data log: Set, Start, Stop; COM port; Zoom in table, Zoom in graph.(see figure 15)

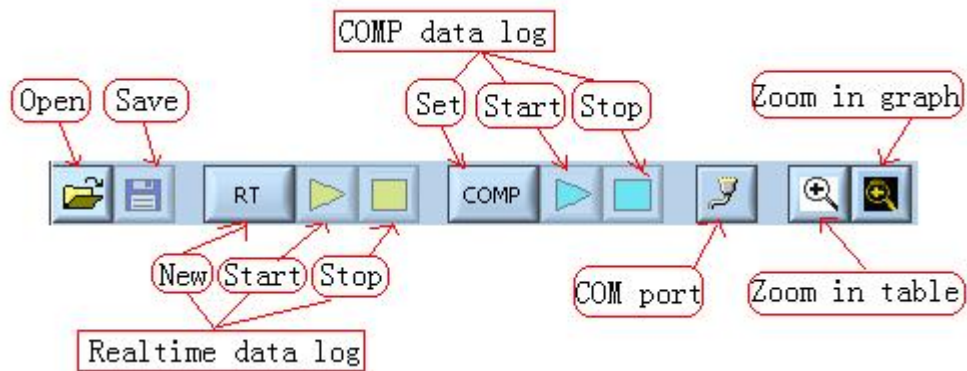


Figure 15

## 5. Windows Explanation

### Meter Panel:

See figure 16, Select the dBm function for the example

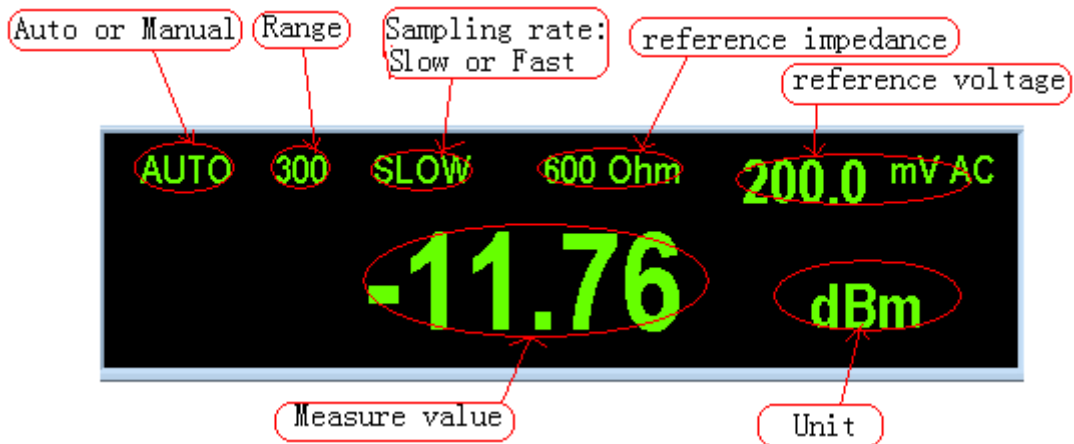


Figure 16

### Buttons:

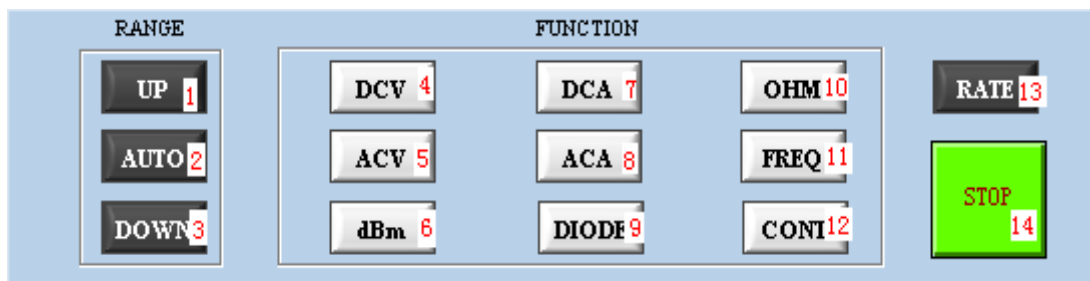


Figure 17

**Range:** 1,range up

2,Auto range

3,range down

**Function:** 4,DCV measurement

7, DCA measurement

10, Resistance measurement

5,ACV measurement

8,ACA measurement

11, Frequency measurement

6,dBm measurement

9,Diode test

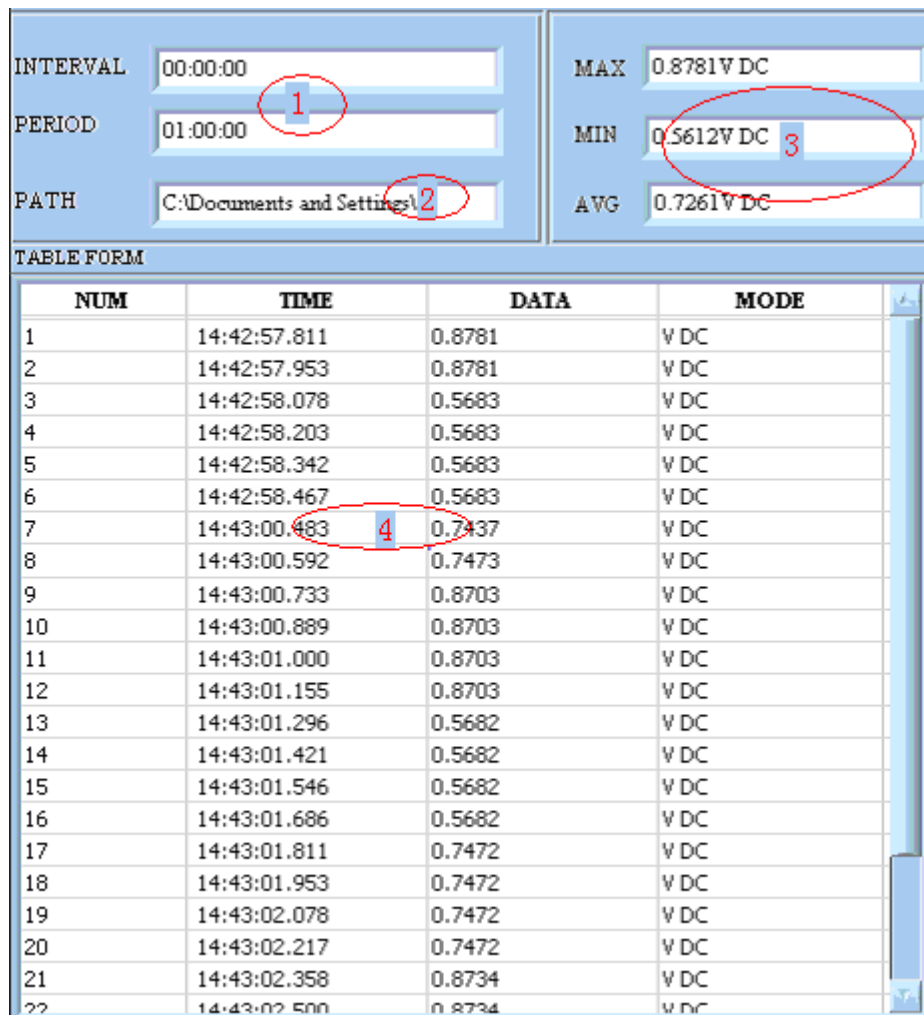
12,Continuity check

13,Select measurement rate

14,Start or Stop communication

## Recording part:

1. Window to display the set value for the real-time data, including interval time and recording time;
2. Display part of present save path;
3. Real-time display of the recorded MAX,MIN and AVG of the table;
4. Table from: record number (NUM), time (TIME), data (DATA) and function (MODE) are in each record;



The screenshot shows a software interface with recording settings and a data table. The settings section includes fields for INTERVAL (00:00:00), PERIOD (01:00:00), and PATH (C:\Documents and Settings\...). The summary section shows MAX (0.8781V DC), MIN (0.5612V DC), and AVG (0.7261V DC). Below is a table with columns NUM, TIME, DATA, and MODE. Red circles and numbers 1-4 highlight specific elements: 1 (INTERVAL), 2 (PATH), 3 (MIN), and 4 (row 7 in the table).

NUM	TIME	DATA	MODE
1	14:42:57.811	0.8781	V DC
2	14:42:57.953	0.8781	V DC
3	14:42:58.078	0.5683	V DC
4	14:42:58.203	0.5683	V DC
5	14:42:58.342	0.5683	V DC
6	14:42:58.467	0.5683	V DC
7	14:43:00.483	0.7437	V DC
8	14:43:00.592	0.7473	V DC
9	14:43:00.733	0.8703	V DC
10	14:43:00.889	0.8703	V DC
11	14:43:01.000	0.8703	V DC
12	14:43:01.155	0.8703	V DC
13	14:43:01.296	0.5682	V DC
14	14:43:01.421	0.5682	V DC
15	14:43:01.546	0.5682	V DC
16	14:43:01.686	0.5682	V DC
17	14:43:01.811	0.7472	V DC
18	14:43:01.953	0.7472	V DC
19	14:43:02.078	0.7472	V DC
20	14:43:02.217	0.7472	V DC
21	14:43:02.358	0.8734	V DC
22	14:43:02.500	0.8734	V DC

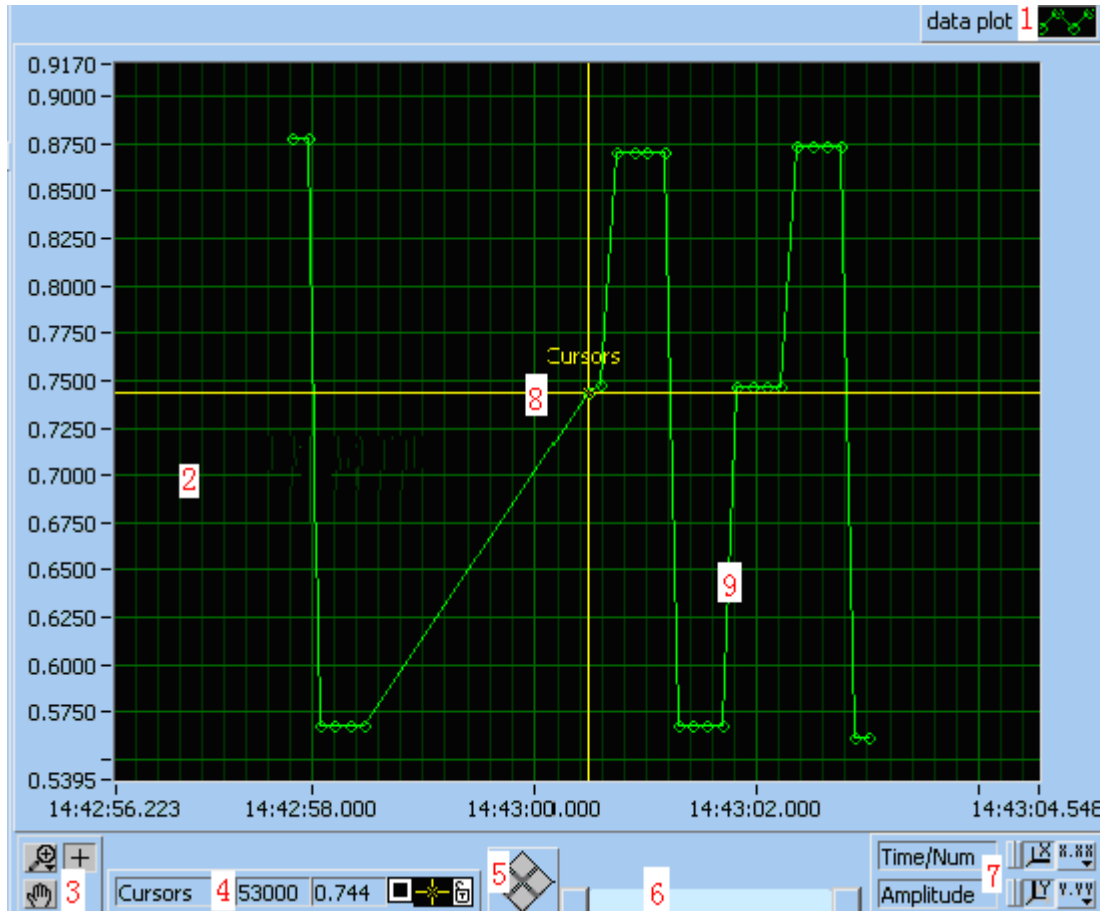
**Figure 18**

### Note

This data list saves 50,000 records at most, when the user has not started the automatic save

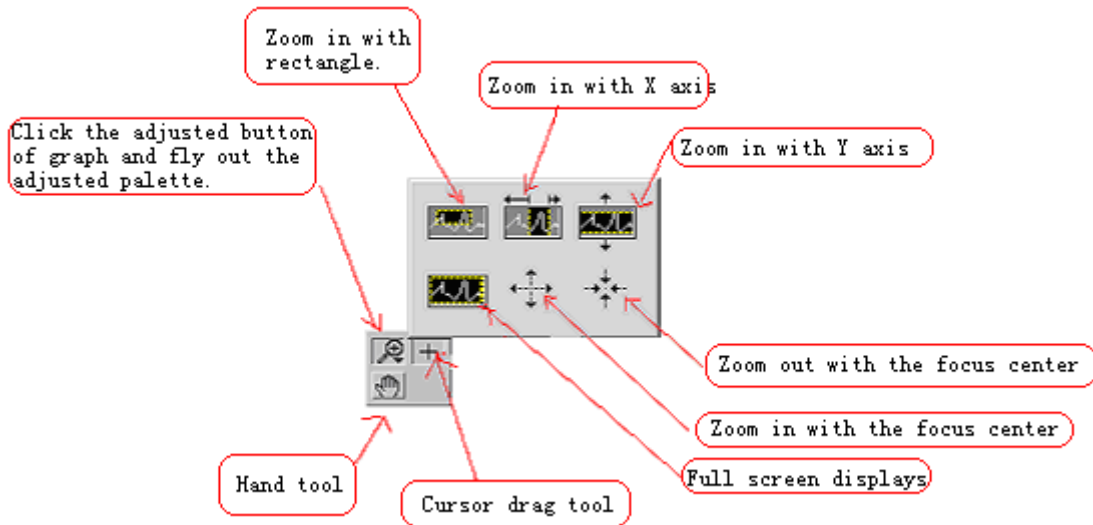
function (Auto Save) and recording reaches 50,000, a dialog box will spring out to instruct the user to preserve the current record and rewrite the recording after save.

## Graph:

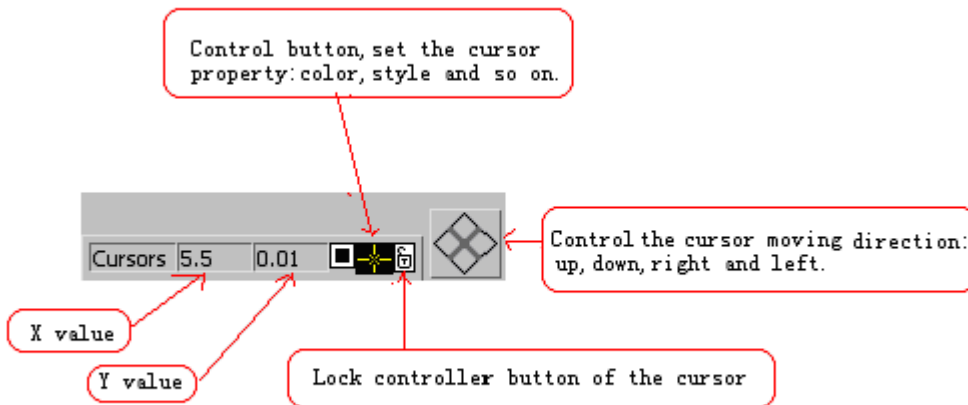


**Figure 19**

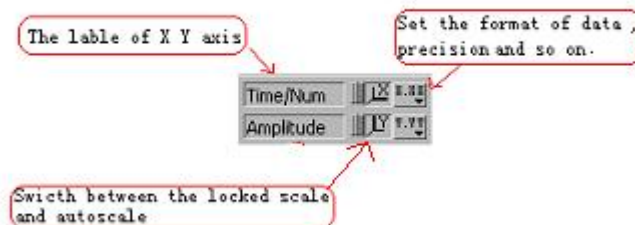
1. Plot legend, click on the left key in the Plot legend of symbols to spring a menu, the user can set the attributes of the plot, including: color, line style, etc. ;
2. Plot display part;
3. Graph palette: to enlarge, or move the displayed plot; (See Figure 20)
4. Cursor legend; (See Figure 21)
5. Cursor move;
6. X scroll bar;
7. X , Y scale legend;(See Figure 22)
8. Cursor;
9. Data plot;



**Figure 20**



**Figure 21**



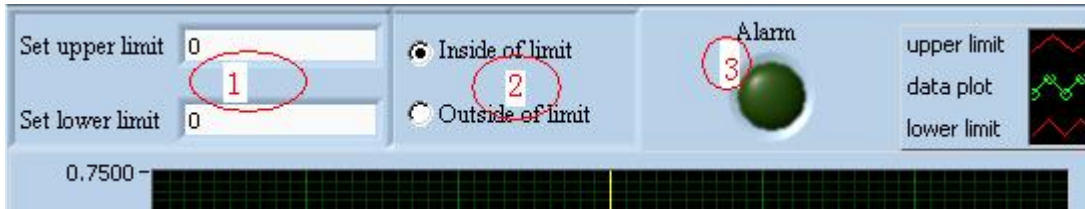
**Figure 22**

**Note**

1. The graph data plot renovates along with the measuring function change;
2. When the data is OL, the graph data point demonstrates as 5, 000,

---

## COMP Set Windows:



**Figure 23**

1. Set the upper and lower limit values, which are both defaulted as 0;
2. Choose within-range or out-of-range, which is defaulted as within-range;
3. Alarm and record when the measured value satisfies the set conditions;(Alarm LED light turns red)

### Note

After setting the limits, make sure to start the COMP function after the cursor is out of depart 1, otherwise system bulletins set mistake.

## 6. F & Q

1. Q: Why can't I make communication after installing the entire upper-end meter and the driver procedure correctly?  
A: Please check whether the set COM connection is complied with the driver's defaulted COM connection and whether the driver has been installed correctly or not.
2. Q: Why the installed communication connection is so unstable that it will display in the PC machine equipment resource management window sometimes?  
A: This kind of situation appears when the driver software is installed incompletely; remove the entire old CP210x range driver and reinstall under the instruction manual.
3. Q: In the communication, what should I do if the communication can't be realized when I reconnect the cable correctly after disconnecting them without exiting from the upper-end software procedure?  
A: Exit this software procedure, restart the software and undergo the communication.

### Note

1. Make sure the PC has been connected ground before starting the communication function
2. Do exit from the upper-end software procedure before disconnecting the cable, otherwise the communication will not be realized.